

ISO BUTANE
PERCENT 1

NORMAL BUTANE
PERCENT 1

5600

5700

5800

5900

6000

6100

6200

6300

6400

6500

6600

MW in 9.9 MW out 9.9

LS: tan to gry, frm to hd, blk, chnky, plty, arg, micxl.

LS: tan to gry, frm to hd, blk, chnky, plty, arg, micxl.

LS: tan to gry, frm to hd, blk, chnky, plty, arg, micxl.

LS: drk gry, gry, frm-hd, blk, plty, filky, drty, arg, micxl, foss

MW 9.9 FV 67 PV 19
YP 15 Fil Chl 38000

CK: tn, crm, wht, chky, mod frm-hd, blk, v calc.

CK: tn, crm, wht, chky, mod frm-hd, blk, v calc.

Bit #2 drilled 4360' in 37 hrs. NB #3 8 3/4" with 6x13's, 2° bend motor and MWD/LWD assy.

MW in 10 MW out 10

CK: tn, crm, wht, chky, mod frm-hd, blk, v calc.

MW 10 FV 72 PV 20
YP 12 Fil Chl 32000

MW in 9.95 MW out 9.95

CK: tn, crm, wht, chky, mod frm-hd, blk, v calc.

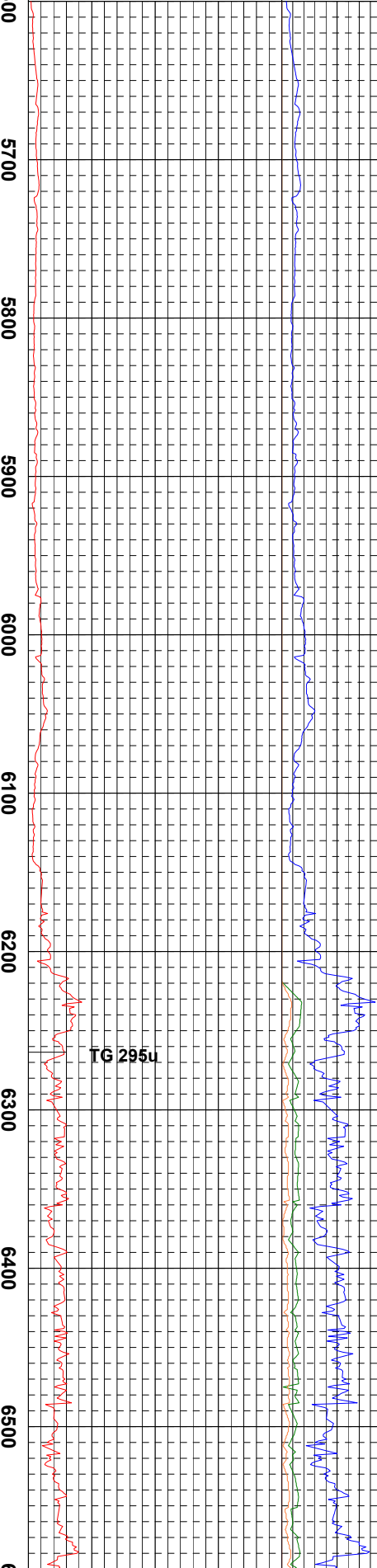
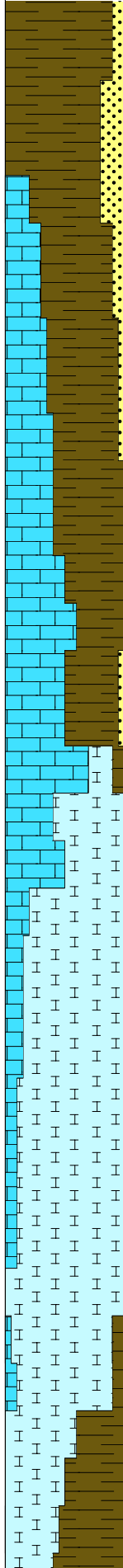
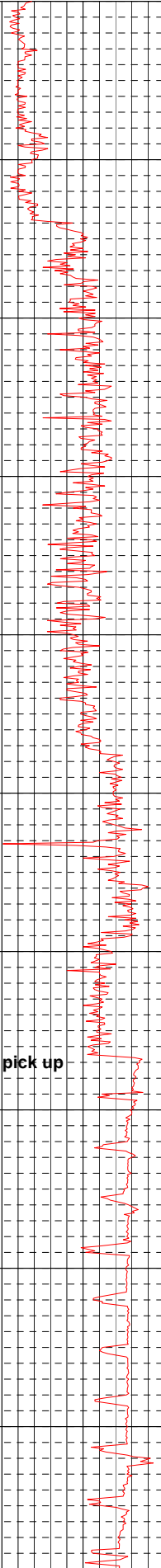
SH: blk to dk gry, blk-fly, stly ip, frm-hd, brit ip, wxy, v calc.

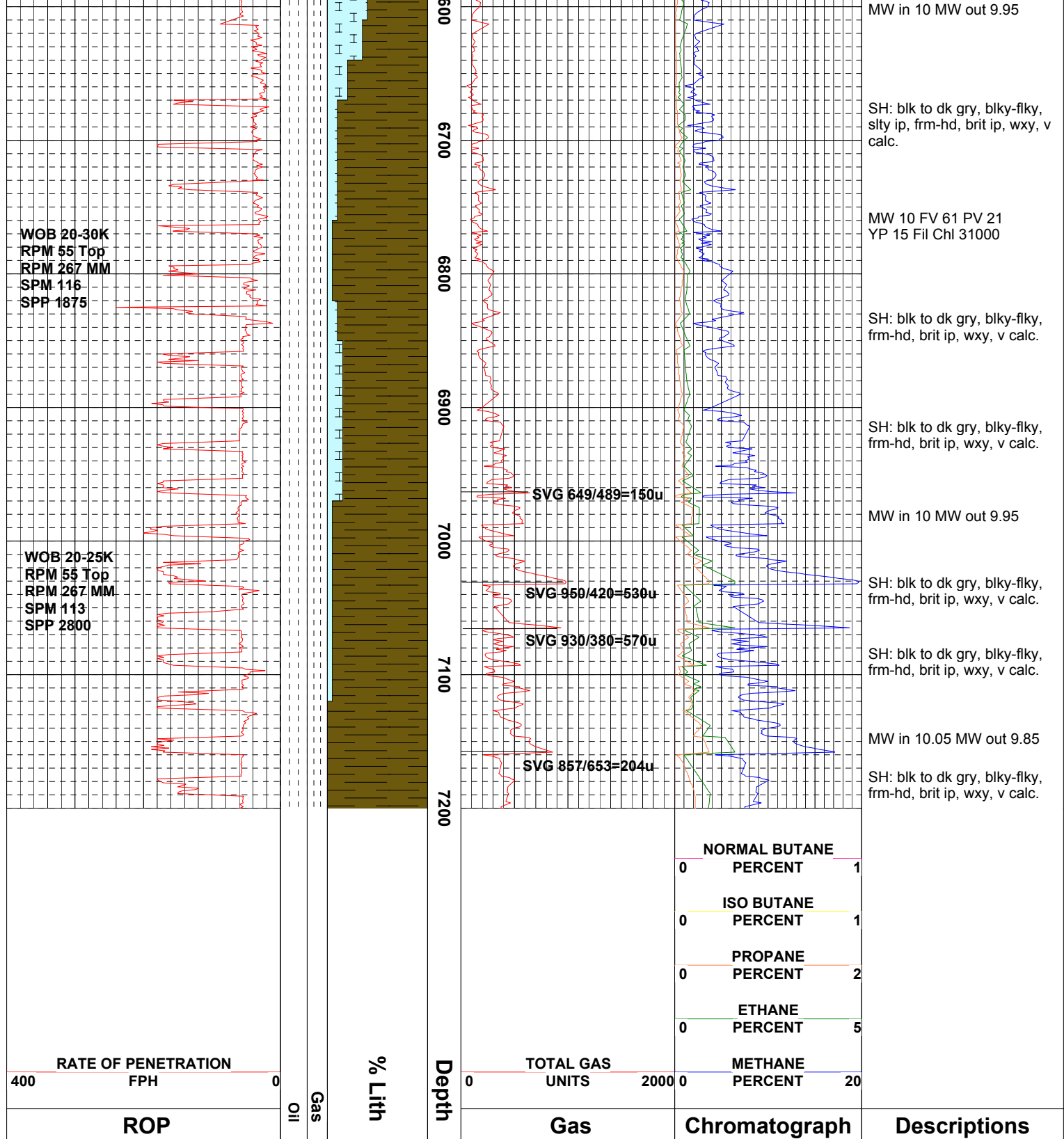
WOB 10-17K
RPM 120-130
SPM 124
SPP 1713

POOH to E-Log & pick up directional assy.

WOB 10-15K
RPM 55 Top
RPM 267 MM
SPM 123
SPP 2480

TG 295u





WOB 20-30K
RPM 55 Top
RPM 267 MM
SPM 116
SPP 1875

WOB 20-25K
RPM 55 Top
RPM 267 MM
SPM 113
SPP 2800

SVG 649/489=150u

SVG 950/420=530u

SVG 930/380=570u

SVG 857/653=204u

RATE OF PENETRATION
 400 FPH 0

ROP

Oil
Gas

% Lith

Depth

TOTAL GAS
 UNITS 0 2000

Gas

NORMAL BUTANE
 0 PERCENT 1

ISO BUTANE
 0 PERCENT 1

PROPANE
 0 PERCENT 2

ETHANE
 0 PERCENT 5

METHANE
 0 PERCENT 20

Chromatograph

Descriptions